

P-Tn 'Visual Documentation' SEMINARS

Our brief and informative seminar is intended to help your staff better understand the benefits of 'Visual Documentation' on construction & engineering projects.

P-Tn owner and head photographer, Eric Berndt, will present samples of the services **P-Tn** has been delivering for over three decades, including current digital approaches to Visual Documentation. Learn when to shoot film or digital pictures, what pixels and dpi resolution really tells you, which file formats and names to use, how to protect against unauthorized image manipulation, archive digital files, convert VHS videos to DVD, and more. We will summarize the terminology to use for obtaining quality digital files ... and provide access to **FREE** specification wording outlines - covering requirements for construction progress photos, before & after photos and/or videotape of pipeline and street projects, aerial progress photography, digital file preparation and delivery, live internet web cameras on construction sites, and other documentation.

A question-answer session will give you the opportunity to ask for photography advice from a professional, whether it relates to **P-Tn** services, or to your firm's in-house or staff management of photos & videotapes.

Time; allow an hour ... Cost; none ... why none?
This is our opportunity to introduce you to **P-Tn**, while encouraging construction-industry engineers and design professionals to employ current industry standards. Everyone benefits!

Please call for more information, or to discuss scheduling a 'Visual Documentation' SEMINAR for your firm.

LEARN MORE ABOUT P-Tn BY VISITING: <http://www.P-Tn.com>



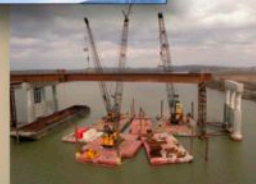
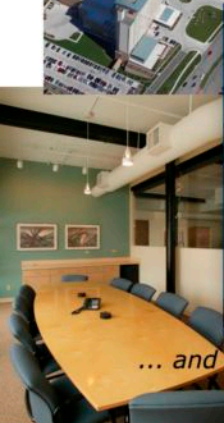
VideoRECORD
stillframe series



P-Tn KIRKWOOD CIRCLE: PHASE 1D - KANSAS CITY, MISSOURI
MAY 4, 2004 - VIEW TO WNW - MID-RISE
040504AC.JPG [04091A-4] J.E. Dunn Construction
KIRKWOOD ↔ www.P-Tn.com 913-384-9369



P-Tn KCI AIRPORT - NEW SATELLITE PARKING LOT PACKAGE A ↔ ASATELLI Superior Bowen Asphalt / SK Design Group
NOVEMBER 4, 2002 VIEW 0414 TO NE - P&B Ops BLDG / BUS STORAGE FACILITY: FROM 3000 FEET
© www.P-Tn.com 913-384-9369



... and not just construction photographs ... architectural, industrial photos, marketing, portraiture, aerials..

P-Tn / Photo-Technique
6835 LAMAR AVENUE
OVERLAND PARK, KANSAS 66204
voice/fax 913-384-9369
www.P-Tn.com